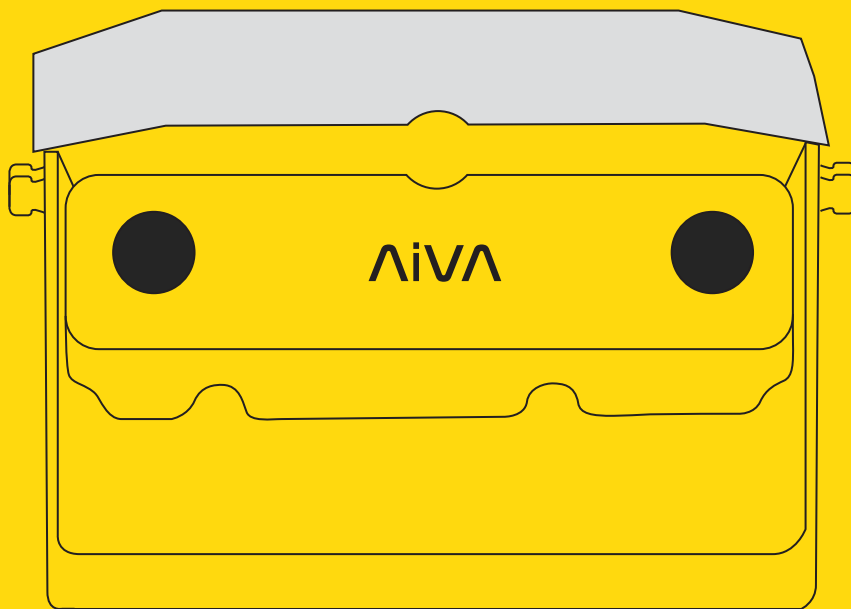


# AiVA

Pedestrian Detection System

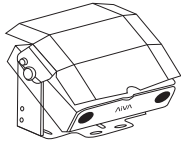
## Onboarding guide



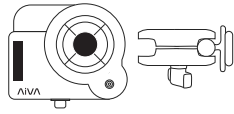
Scan for the  
install video.

# What's in the box

AiVA



remote and bracket



AiVA operator remote harness



safety tether



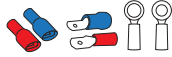
AiVA main harness



cable ties and sticky pad mounts



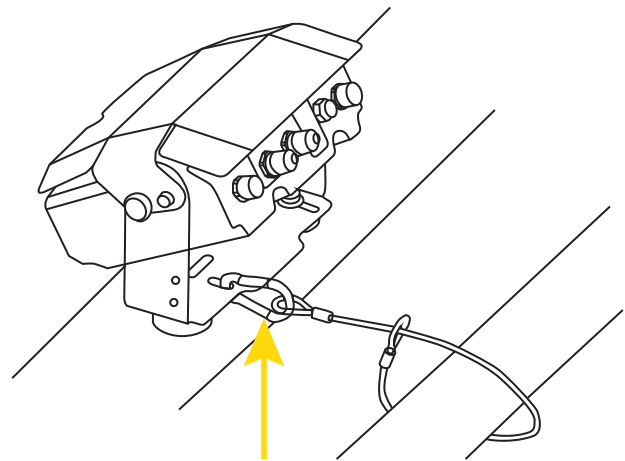
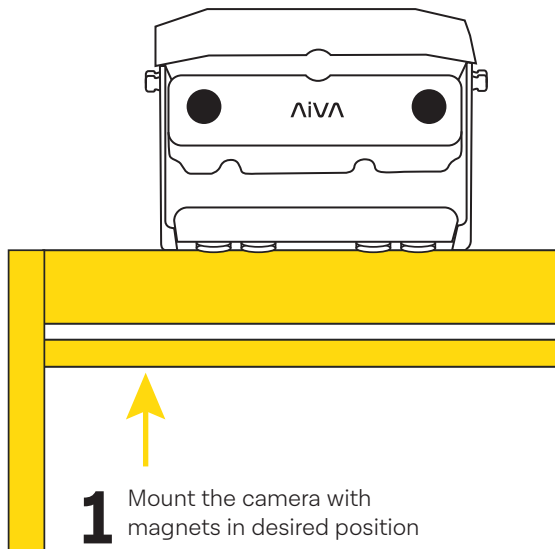
crimp terminals



## Required tools (not included)

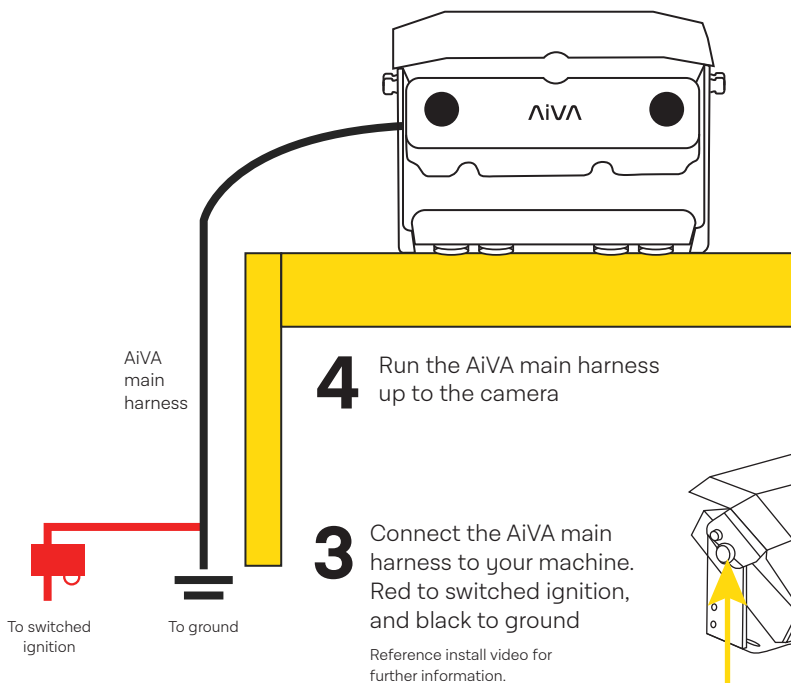
Side cutters • Wire Strippers • Crimpers • Test light or Multimeter

# Installation guide



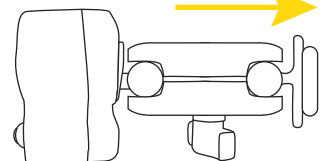
## SAFETY WARNING

Secure AiVA to the machine with the included tether

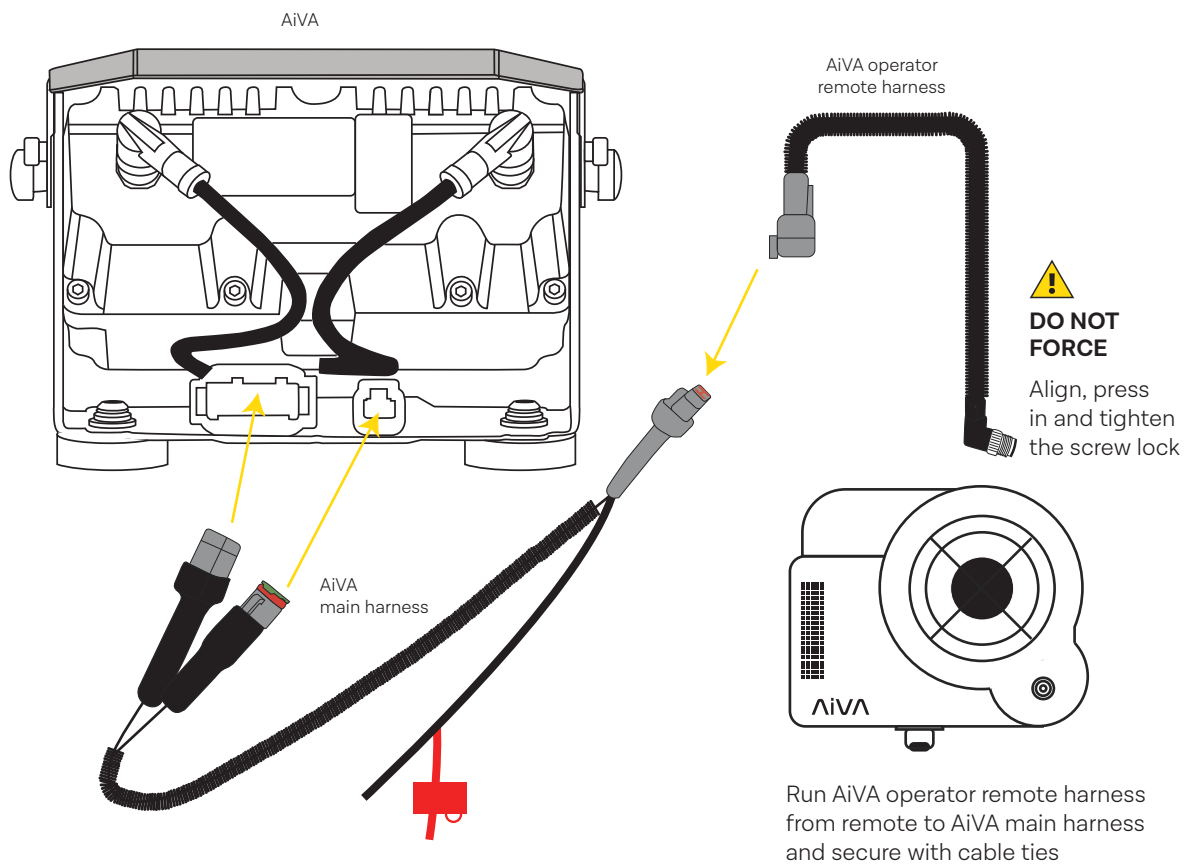


**5** If needed, adjust the angle with thumb screws

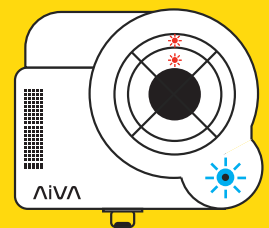
**6** Mount the remote with the magnets



# Connecting the cables



# Activation & testing



**1** Download the app to configure and activate  
Configuration includes height, offset and detection range.

**2** Turn equipment power to 'on'

**3** Wait 30 seconds  
"Power on, system booting" and circling blue LEDs will indicate AiVA is turning on. "System ready" and a flash of green LEDs will indicate a successful boot.

**4** Operator remote will provide voice prompts and show a yellow or red LED in the corresponding location when a pedestrian is in view of the camera.



Scan for more information about testing and activation.

Please see the instructional video for timer relay installation.

[speedshield.com](https://speedshield.com)

